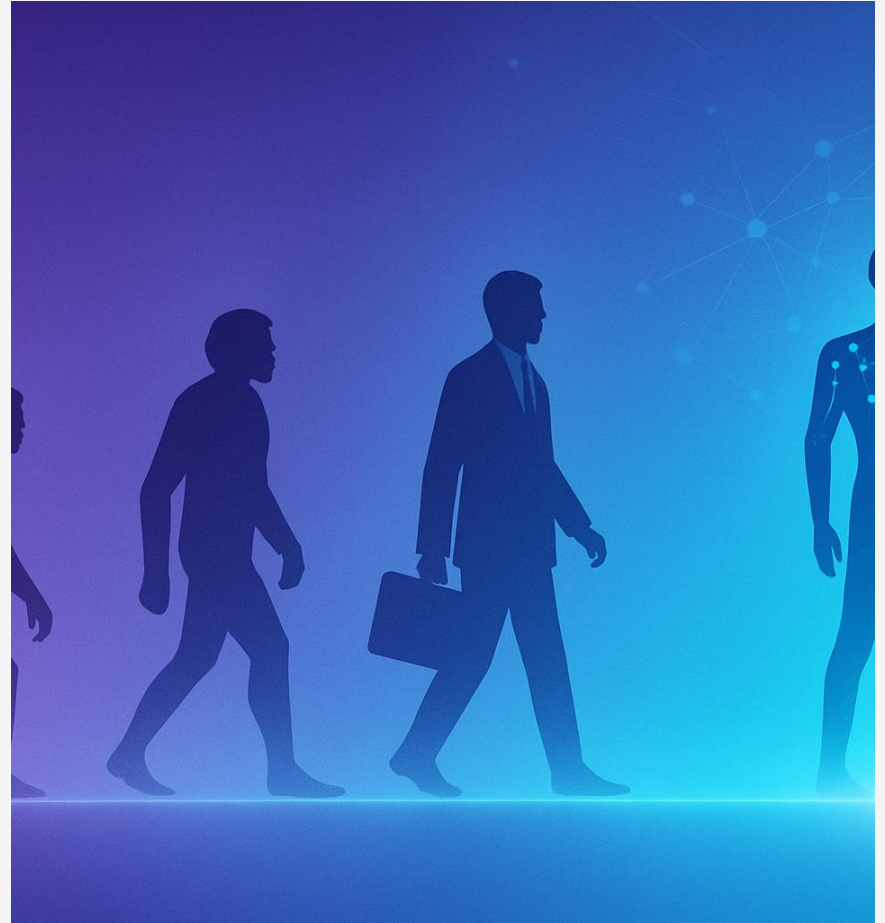


# The AI Revolution Requires Adaptation

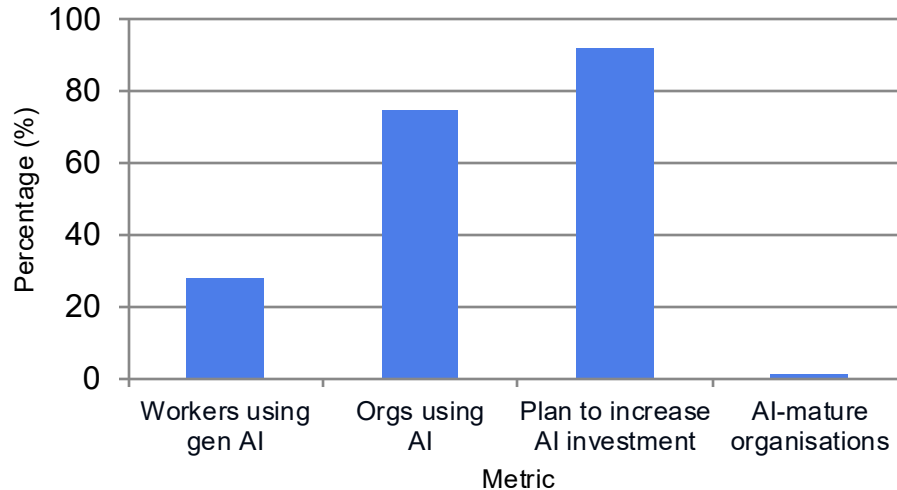
*Evolve42: AI reshapes work. Adapt now!*

July 30, 2025



# AI's Non-linear Acceleration

## Adoption & Investment Trends



- 28% of workers use generative AI, saving about 5% of their time each week ( $\approx 2.2$ h) and increasing productivity during AI-assisted hours.
- More than three-quarters of organisations deploy AI in at least one business function – up from less than half a few years ago.
- 92% plan to increase AI investment in the coming years, yet only 1% consider themselves AI-mature, highlighting a huge execution gap.

# Workflows Changed Before the Apps Did



## Writing



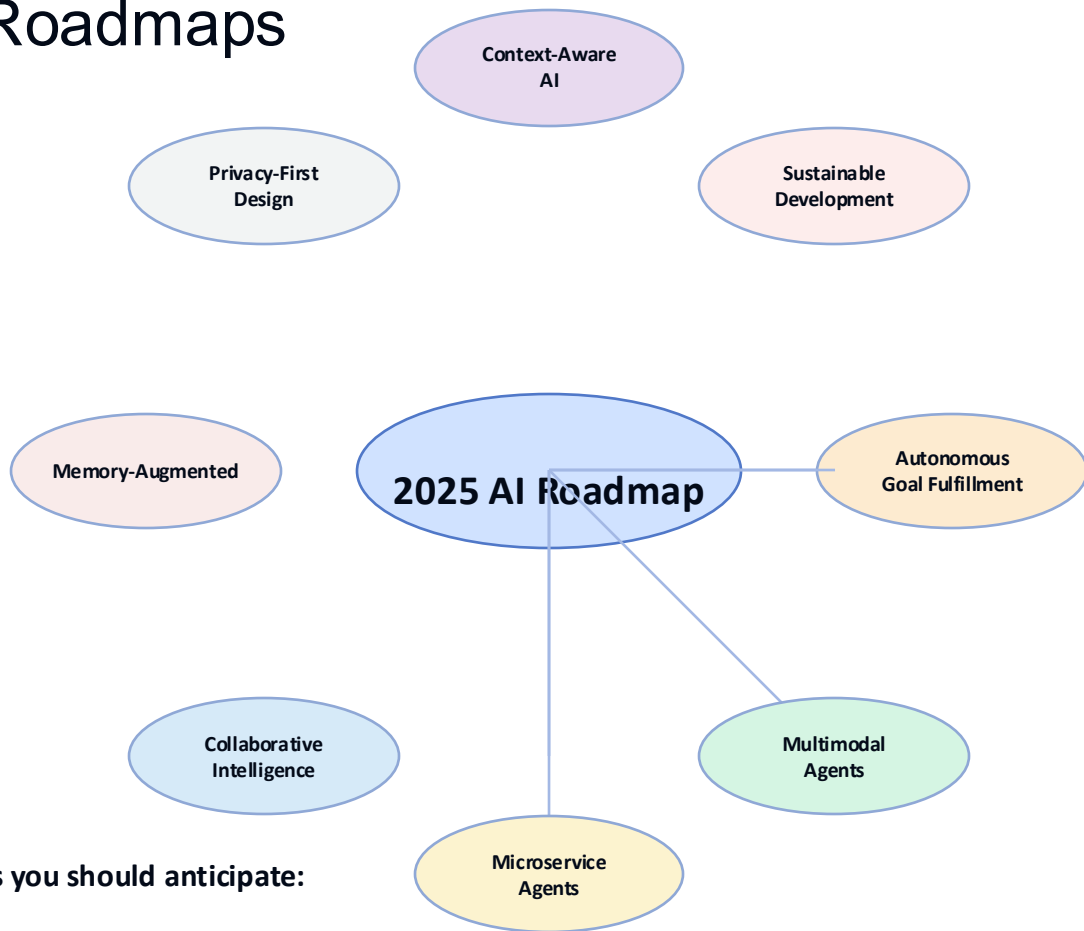
## Coding



## Meetings

- AI drafting and editing reduce composition times, improve clarity and tone.
  - Generative code and automated debugging accelerate development cycles and reduce errors.
  - Automated transcripts, summarisation and agenda suggestions make meetings shorter and more productive.
- 
- Early AI adoption already delivers real productivity gains – workers save hours and produce higher-quality outputs.
  - Yet enterprise-wide productivity gains remain elusive because workflows haven't evolved with AI.
  - Only 1% of organisations consider themselves AI-mature – the gap between potential and reality is enormous.

# Plan for AI Roadmaps



**Emerging AI primitives you should anticipate:**

# Evolving Use Cases

*AI moves from assistive to interactive and now to adaptive roles across industries.*

Category	Examples
Data analysis	Healthcare: personalized diagnostics; Retail: demand forecasting; Finance: portfolio optimisation
Customer personalisation	Retail: recommendations & targeted promotions; Education: adaptive learning
Predictive analytics	Logistics: route optimisation; Finance: fraud detection and risk scoring
Security & compliance	Cybersecurity threat detection; Healthcare: privacy management
Product development	Manufacturing: design automation; Software: automated testing & bug triage

# How Users Engage with AI

## Sceptics

- Use AI once or twice a month
- Negligible time savings

## Novices

- Use AI a few times a month
- Save up to 30 mins/day
- Half intentionally start their day using AI

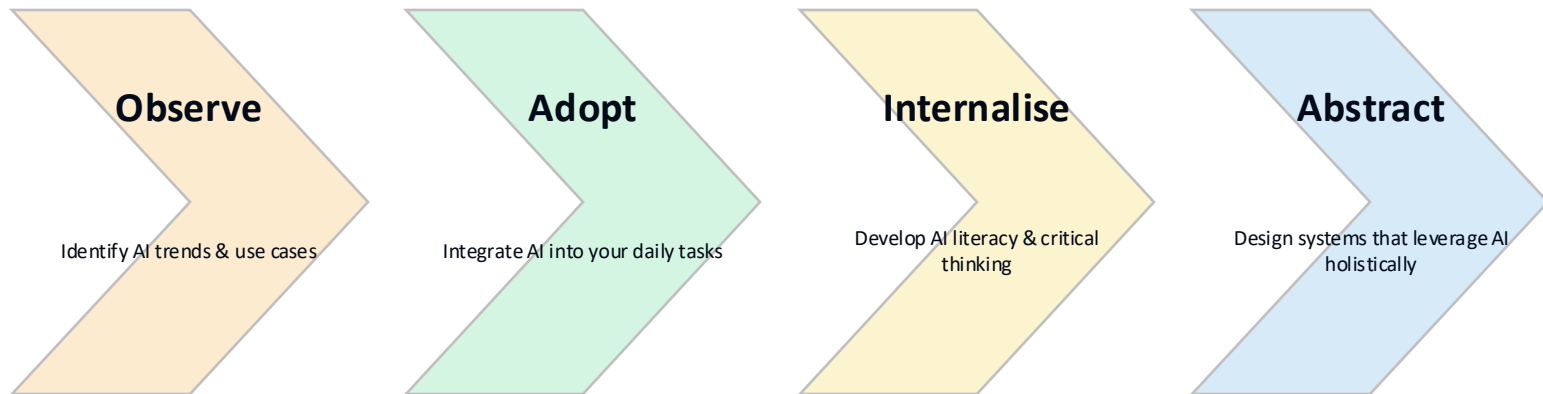
## Explorers

- Use AI weekly or whenever possible
- Ask 'Can AI help?' before starting tasks
- Wouldn't want to go back to pre-AI workflows

## Power Users

- Integrate AI throughout the day
- Start and end work with AI tools
- Receive leadership encouragement and guidance

# Your Adaptation Plan — From User to Architect



*The gap is growing. How you respond determines whether you're replaceable or indispensable.*

[\[18\]](#) [\[19\]](#) [\[20\]](#)



**"You don't need to train models to lead in AI."**  
But you do need to reframe your role and evolve with intention.

*Adapt now to remain effective and competitive.*